



---

The Business of  
**Marine Energy**

---

Oceania Room | Te Papa Tongarewa | Wellington



---

# Project West Wind Barging and Wharf Operation

Chris Jones - Meridian Energy Ltd

Acknowledgements to Malcolm Gilberd - Seaworks Ltd

Awatea Conference 2011  
Wellington

---

26 May 2011



## Introduction



- Project West Wind
- Why a marine solution?
- Wharf location selection
- The logistics solution
- Marine Conditions
- Wharf
- Barging
- Planned vs Actual
- Lessons learnt





# Project Location



**Makara**



**Project West Wind Site**



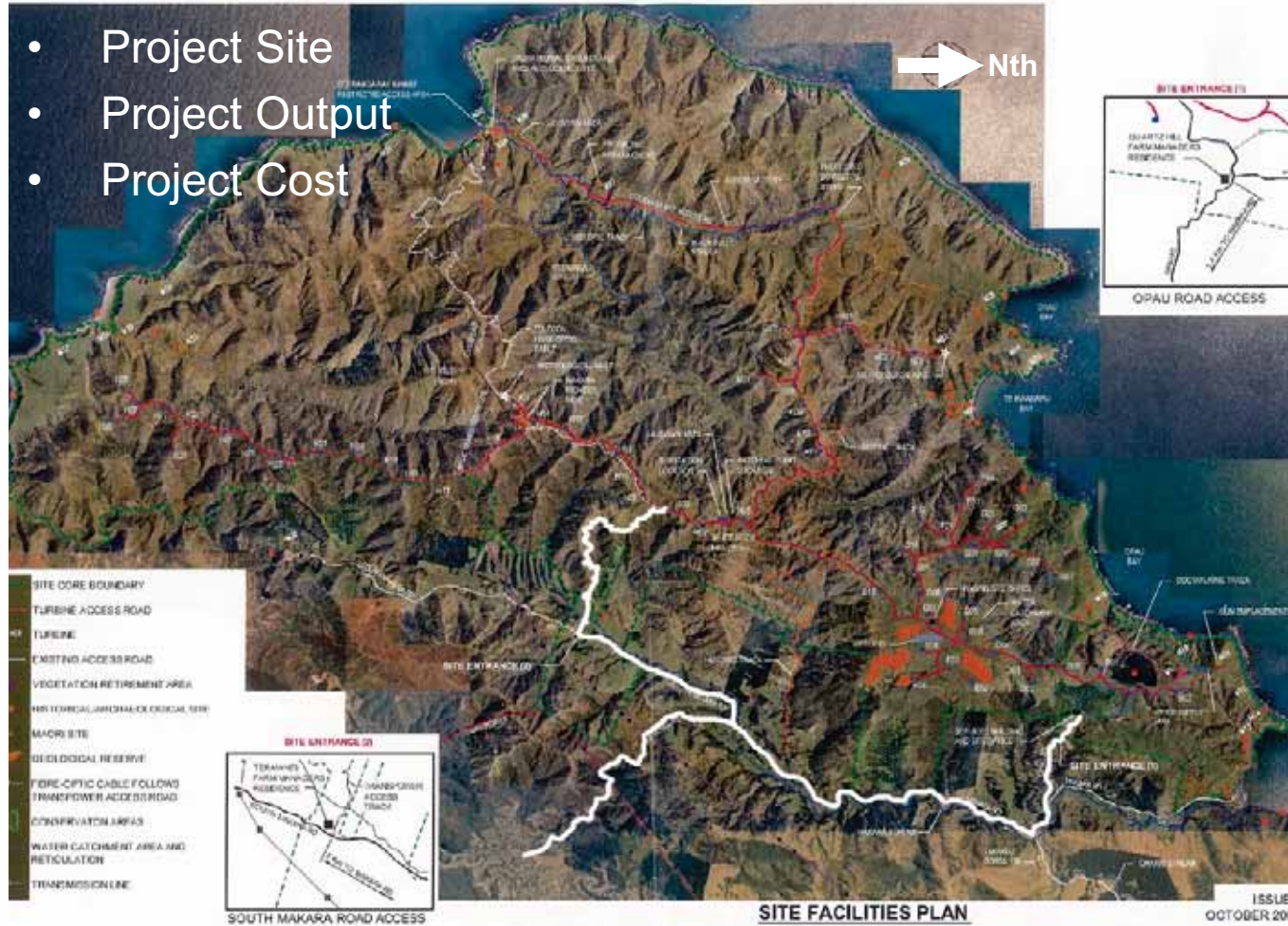
The Business of  
Marine Energy



# Project West Wind



- Project Site
- Project Output
- Project Cost

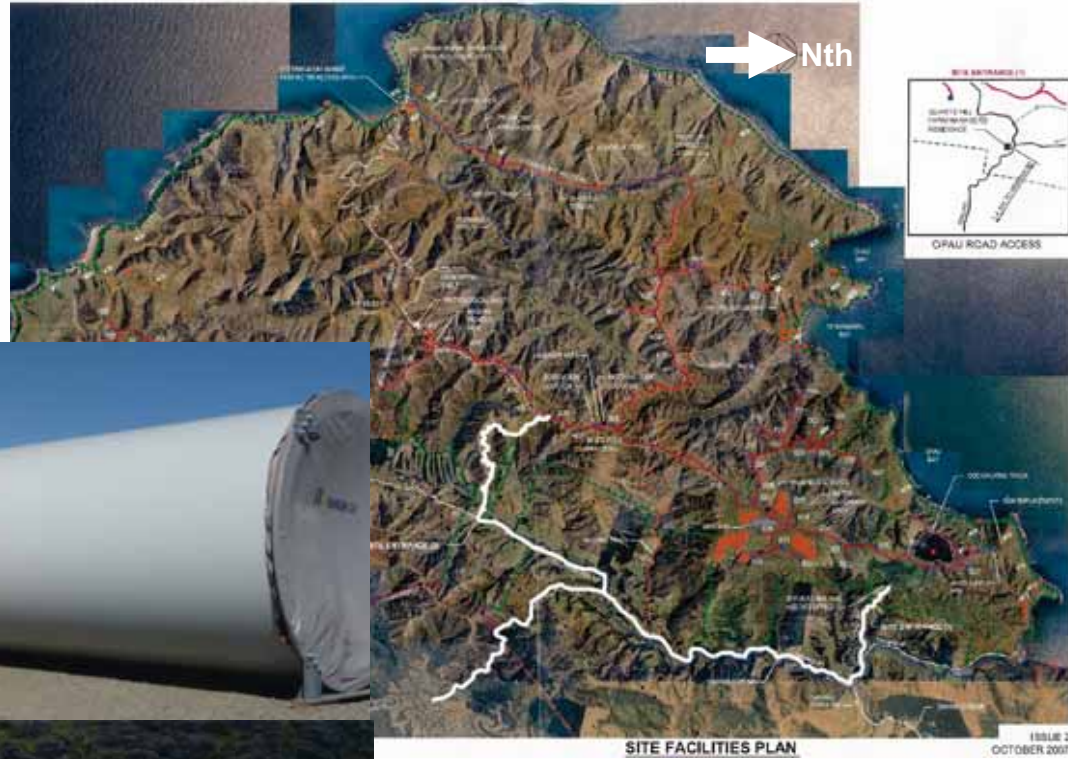


The Business of  
Marine Energy



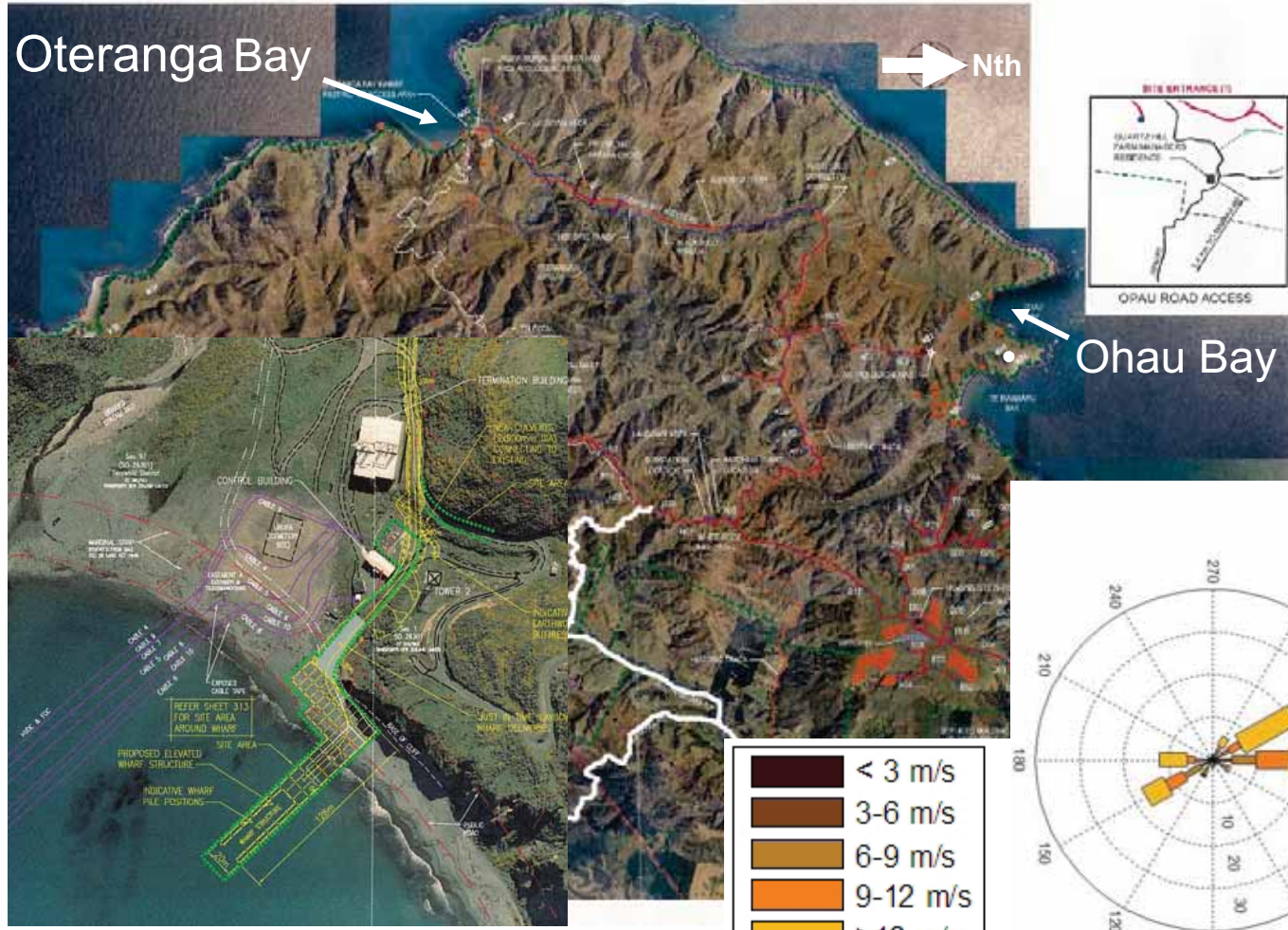
# Why a Marine Solution?

- Component size
- Public Roads



The Business of  
Marine Energy

# Wharf location selection



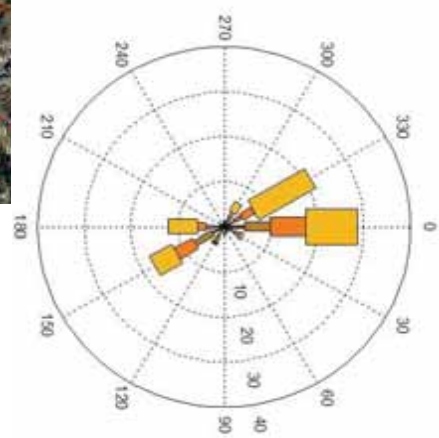
Oteranga Bay

Nth

Ohau Bay

Oteranga Bay

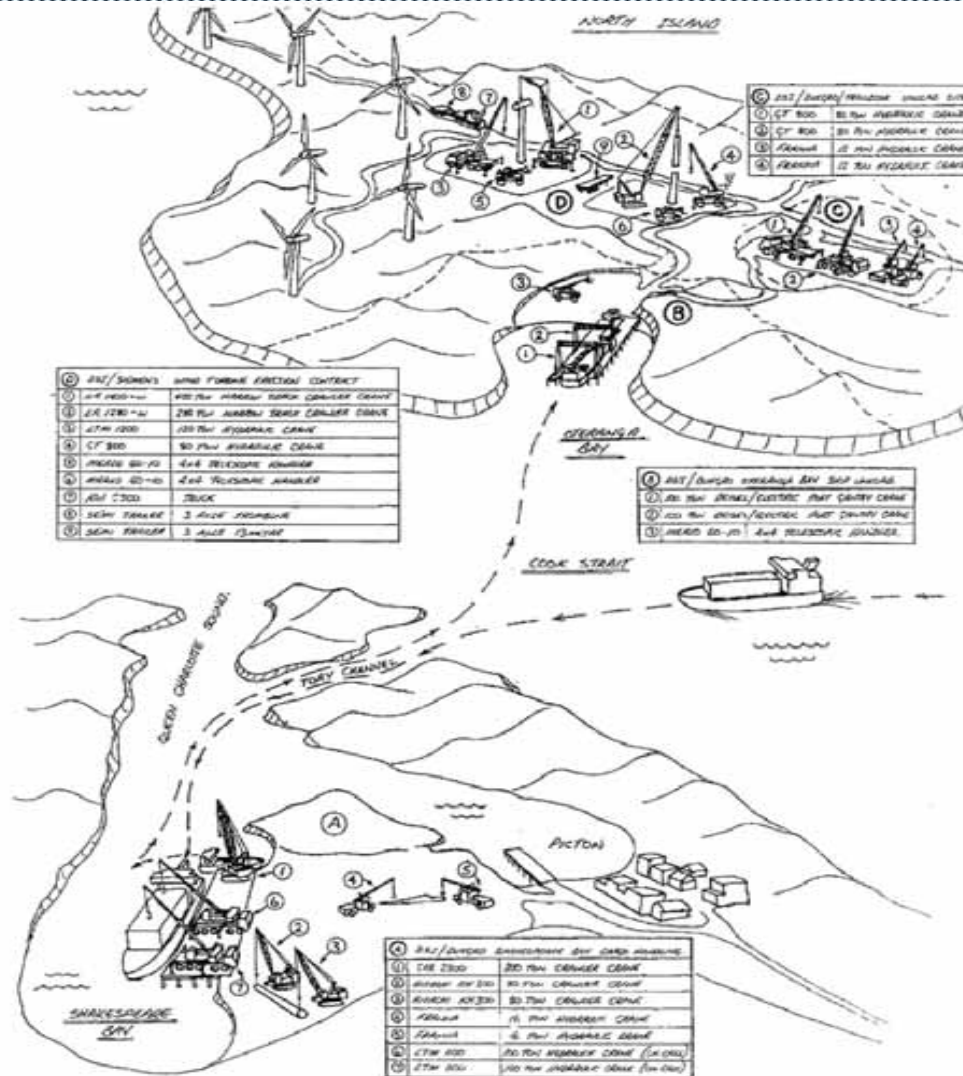
- < 3 m/s
- 3-6 m/s
- 6-9 m/s
- 9-12 m/s
- > 12 m/s



Wind Rose



# The Logistics Solution



The Business of  
**Marine Energy**

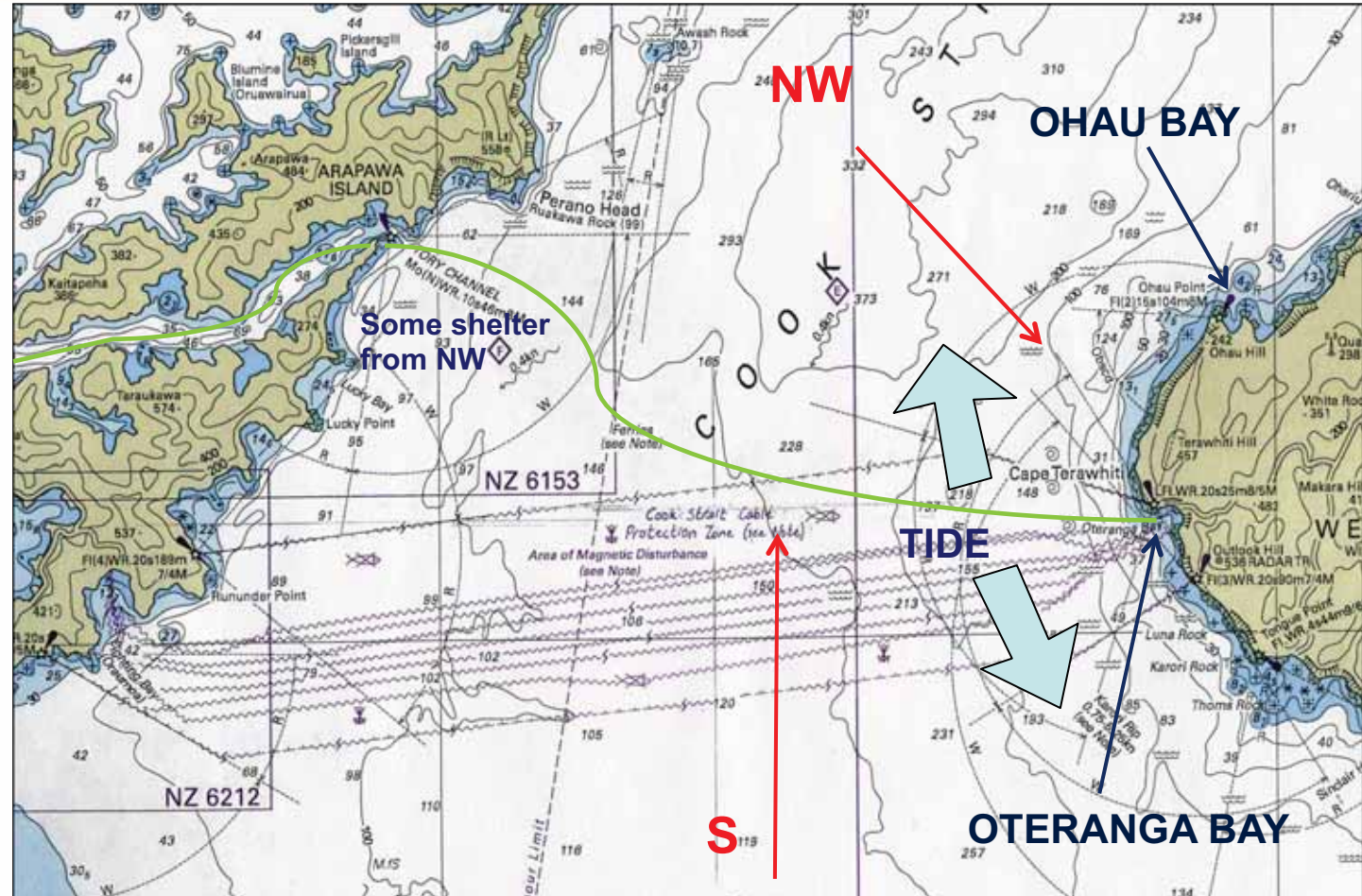




# Marine Conditions



- Picton
- Cook Strait
- Oteranga Bay
- Marine data



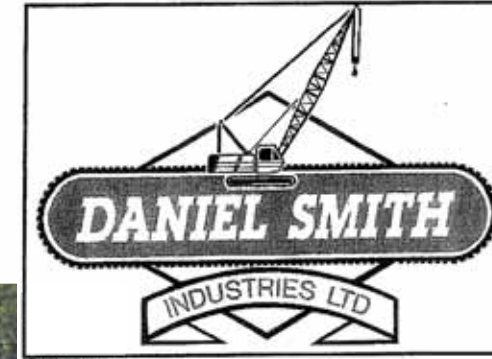
The Business of  
Marine Energy



## The Wharf



- Design and Build - DSI/ OCEL Consultants
- Design process and criteria
- Dimensions
- Construction
- Operation



The Business of  
Marine Energy



## Storm Event - 24 July 2008



The Business of  
**Marine Energy**



## Barging



- Seaworks Ltd
- Selection criteria
- Specs on barge fleet



**MV Seawind**  
LOA 46m/Beam 10.9m/Max Draft 2.5m



**MV Brandywine**  
LOA 41.05m/ Beam 8.84m/Max Draft 2.02m



The Business of  
**Marine Energy**



# Barge/Wharf Operation





## Planned vs Actual performance



Item	Planned	Actual
H & S Stats	Nil lost time	1 No LTI
# Components	560	584
Number Barge Deliveries	273	290
No deliveries/day/barge	2	2
Duration	37 weeks	33 weeks
Oteranga Bay Usability	45%	50%



## Oteranga Bay now



The Business of  
Marine Energy



## Lessons Learnt



- Early contractor engagement
- Team collaboration
- Key relationships
- Contingencies







# Questions?



The Business of  
**Marine Energy**



The Business of  
**Marine Energy**

---

Oceania Room | Te Papa Tongarewa | Wellington