



blue energy

 New Zealand's
Place in the World

Monday & Tuesday

19–20 April 2010

08:30–18:30

Oceania Room,
Te Papa Tongarewa,
Wellington





New Zealand Diving & Salvage Ltd

THE ROLE OF YOUR MARINE CONTRACTOR IN YOUR PROJECT


DOUGAL FERGUS

GENERAL MANAGER

NEW ZEALAND DIVING & SALVAGE LTD



New Zealand Diving & Salvage Ltd

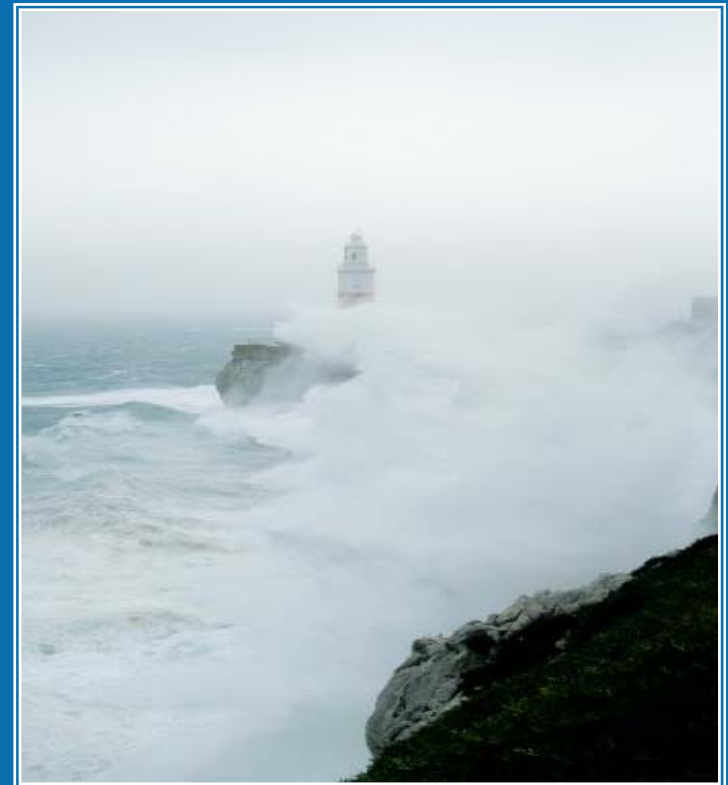


**Welcome to the
reality of a
construction
diver's world**



New Zealand Diving & Salvage Ltd

- Mother Nature is not a shareholder in your business.
- She can go from calm to storm in minutes.





New Zealand Diving & Salvage Ltd

- Often the site with the best resources are in the worst location to dive.
- Involve your marine contractor from the beginning.





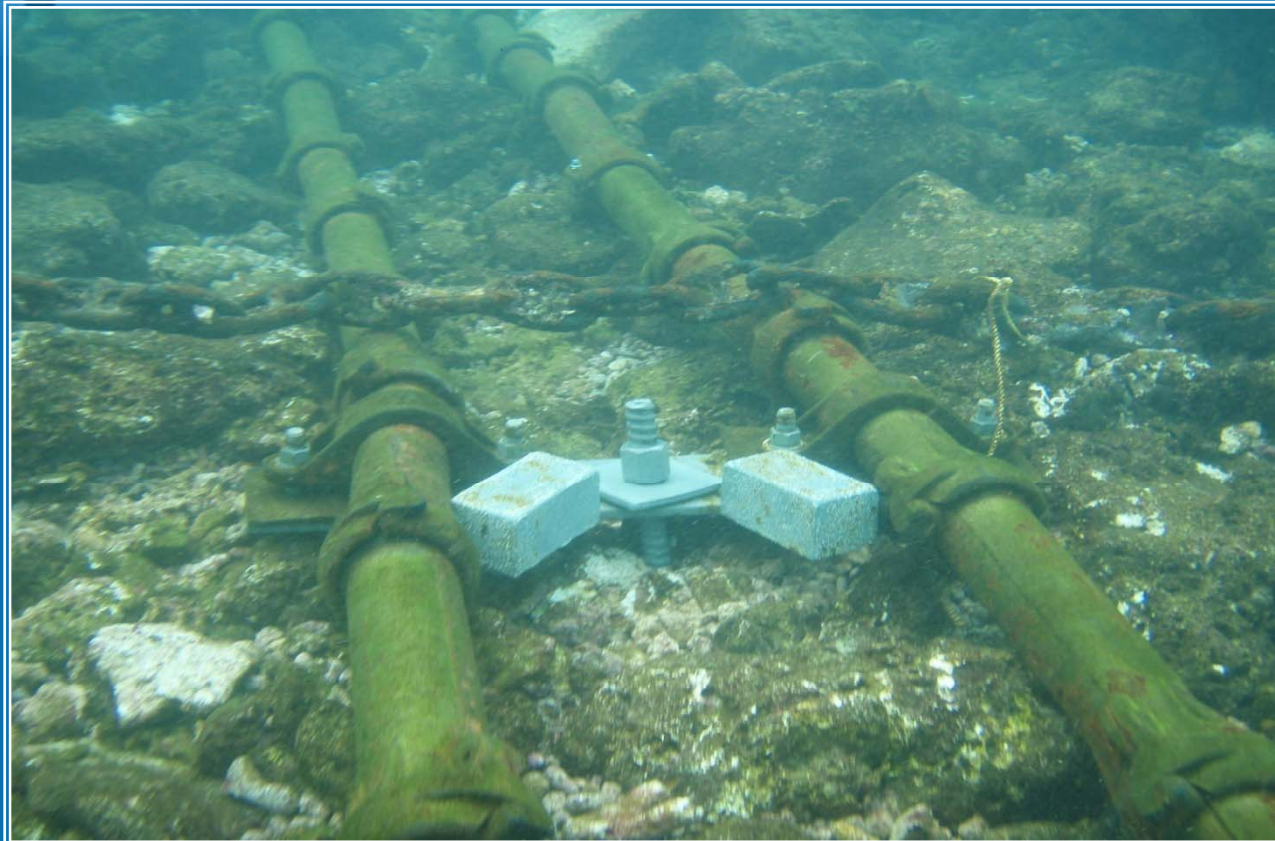
New Zealand Diving & Salvage Ltd

- High currents = Tough environment.
- Expect surprises when at sea.
- Involve your marine contractor early to avoid unnecessary expense & disappointment.



New Zealand Diving & Salvage Ltd

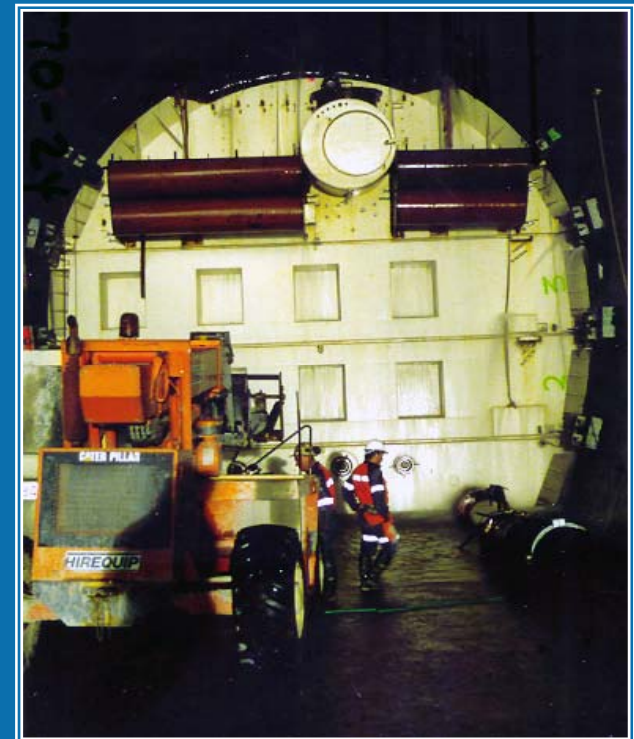
- Erosion and corrosion are often accelerated in turbulent water.





New Zealand Diving & Salvage Ltd

- Involving marine specialists from the beginning save money.
- Creating cost effective installations.
- Reduce whole of life maintenance.
- Ensures project success.





New Zealand Diving & Salvage Ltd

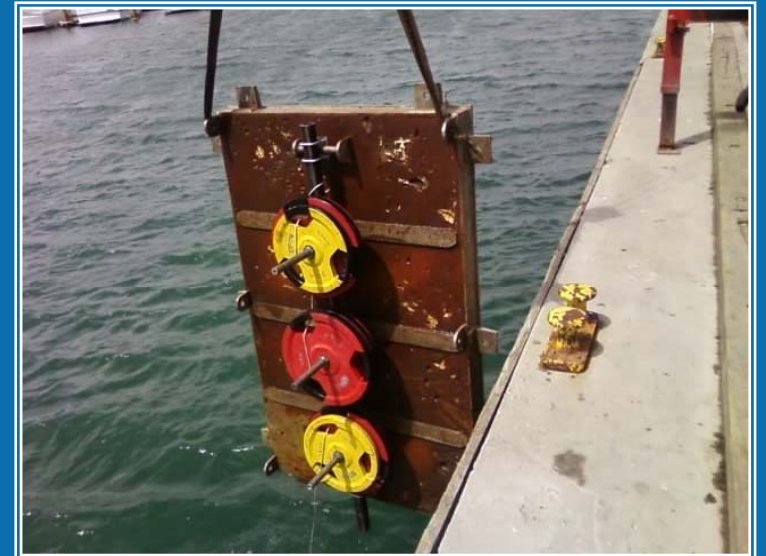
- Very few design engineers and project managers are commercial divers.
- Surface & Sub surface are two completely different worlds.





New Zealand Diving & Salvage Ltd

- Equipment that is not 'diver friendly' can amount to increased installation costs.





New Zealand Diving & Salvage Ltd

In brief, money well spent the following will save you in the long term.

- Site Data
- Unit design
- Installation programme
- Operational Maintenance



New Zealand Diving & Salvage Ltd

Dougal Fergus

General Manager

134 Gracefield Road

PO Box 30 392

Lower Hutt

New Zealand

Tel: 04 568 2505

Mob: 027 4430 552

Fax: 04 568 2123

nzds@nzdivingandsalvage.co.nz